

UPLIFT CONNECTIONS—130MPH WINDS EXP. "B"						
CONNECTION	FRAMING SPACING (in.)	ROOF SPAN (ft.)	U	L	S	NUM. OF 8d COM. NAILS OR 10d BOX NAILS IN EA. END OF 1-1/4"x20 GA. STRAP
ROOF ASSEMBLY TO WALL ASSEMBLY	16" O.C.	17	386	246	109R	4
WALL ASSEMBLY TO WALL ASSEMBLY	16" O.C.	17	386	246	109R	4
WALL ASSEMBLY TO FOUNDATION	16" O.C.	17	170	185	436	4

THERMAL COMPONENT CRITERIA (U-FACTOR AND R-VALUE)

MAX. GLAZING U-FACTOR	MINIMUM INSULATION R-VALUE					
	SHGC	CEILINGS	WALLS	FLOORS	BASEMENT WALLS	CRAWL SPACE
.75	.40	R-26	R-13	R-11	R-5	R-5

ROOF SHEATH. OR CLAD. REQ.
FOR WIND LOAD-EXP. B

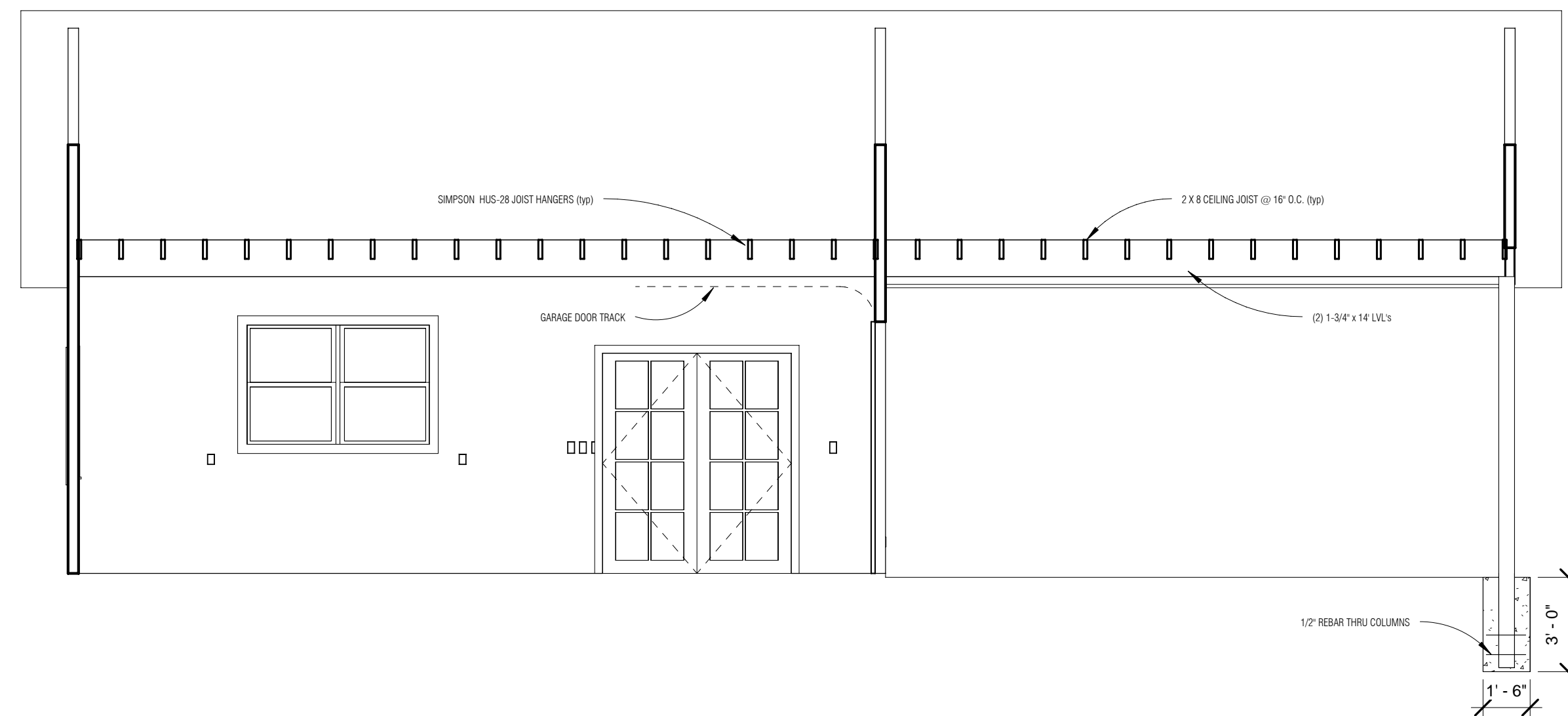
SHEATHING LOCATION	RAFTER/ TRUSS SPAC.	E	F
		MAX. NAIL SPAC. FOR 8d COM. NAILS OR 10d BOX NAILS (INCHES, O.C.)	
INTERIOR ZONE	12" O.C.	6	12
	16" O.C.	6	12
	24" O.C.	6	12
PERIMETER EDGE ZONE	12" O.C.	6	12
	16" O.C.	6	6
	24" O.C.	6	6

130 MPH WINDS-EXPOSURE "B" (TYP.)

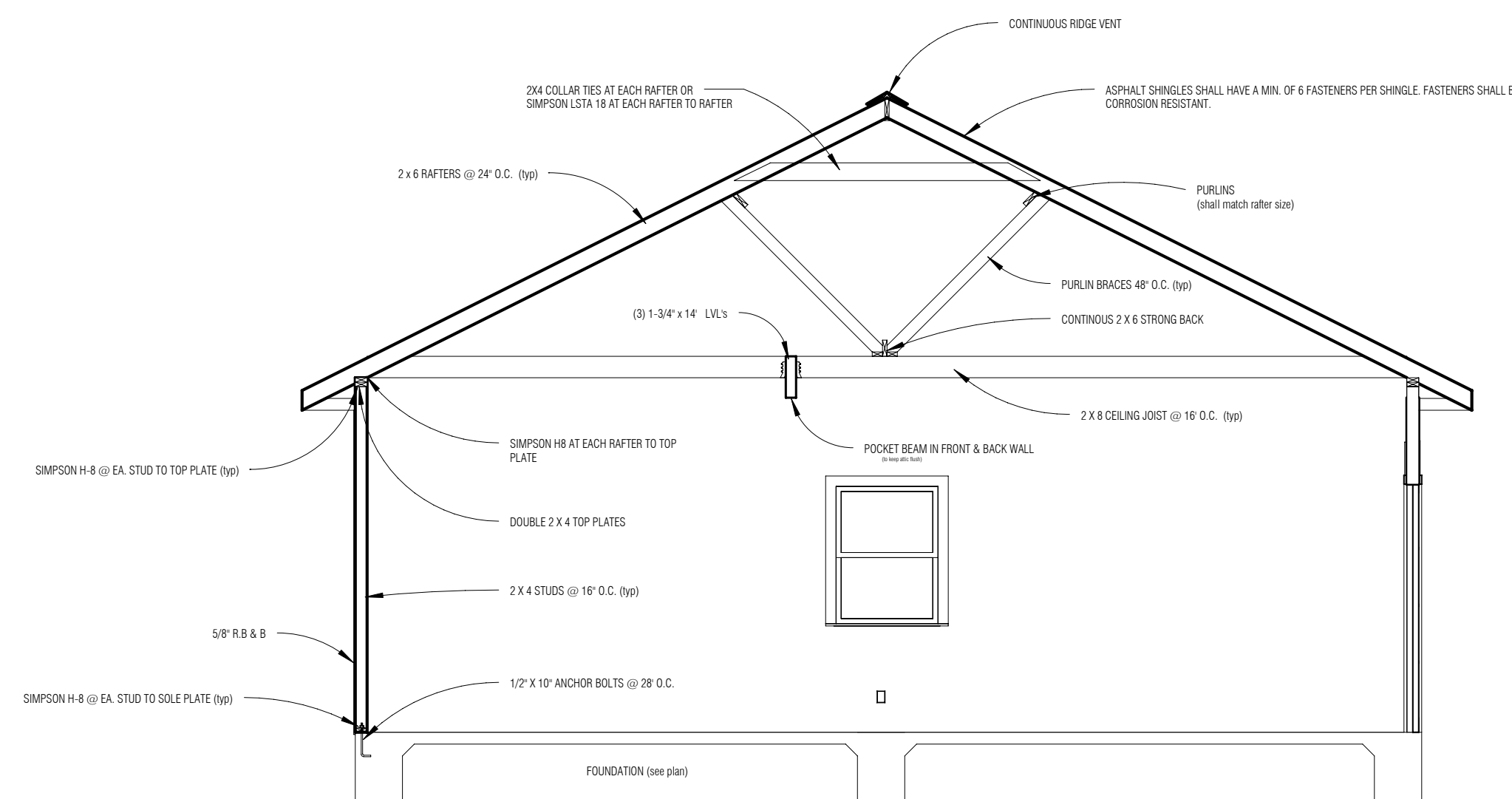
WALL SHEATH. OR CLAD. REQ.
FOR WIND LOAD-EXP. B

SHEATHING LOCATION	STUD SPAC.	E	F
		MAX. NAIL SPAC. FOR 8d COM. NAILS OR 10d BOX NAILS (INCHES, O.C.)	
INTERIOR ZONE	12" O.C.	6	12
	16" O.C.	6	12
	24" O.C.	6	12
PERIMETER EDGE ZONE	12" O.C.	6	12
	16" O.C.	6	12
	24" O.C.	6	12

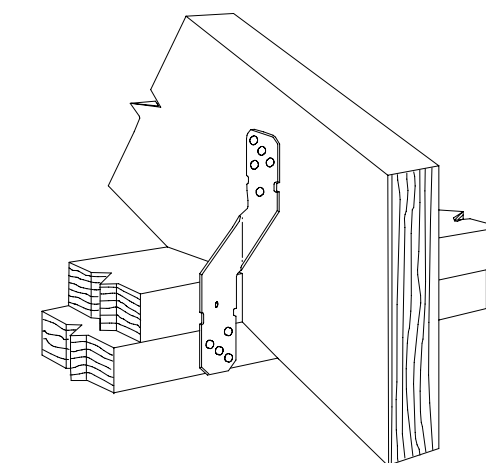
130 MPH WINDS-EXPOSURE "B" (TYP.)



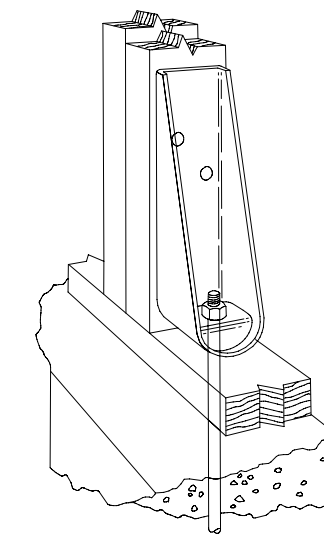
14 Side Cross Section
1/4" = 1'-0"



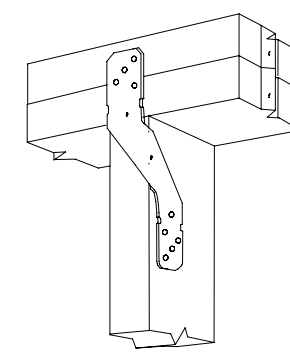
15 Front Cross Section
1/4" = 1'-0"



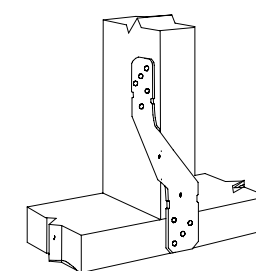
5 SIMPSON H8 RAFTER TO TOP PLATE
1 1/2" = 1'-0"



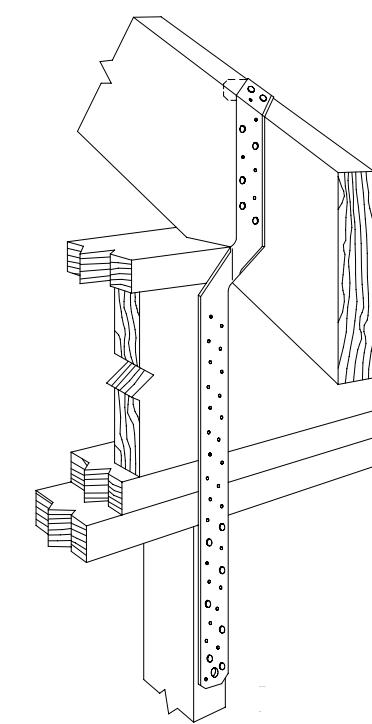
8 SIMPSON PHD5 HOLDOWN
1 1/2" = 1'-0"



7 SIMPSON H8 STUD TO TOP PLATE
1 1/2" = 1'-0"



⑥ SIMPSON H8 STUD TO SOLE PLATE
1 1/2" = 1'-0"



9 SIMPSON KNEEWALL STRAP
1 1/2" = 1'-0"

JACK STUD REQ.—EXP. B
FOR EXT. LOAD BEARING WALLS

HEADER SUPPORTING	HEADER SPAN (ft.)	HEADER WIDTH			
		3"	4.5"	5"	6.5"
		NO. JACK STUDS REQ.			
ROOF AND CEILING	2	1	1	1	1
	4	1	1	1	1
	6	2	1	2	2
	8	2	2	2	2
	10	3	2	2	2
	12	3	2	2	2
	14	4	3	2	2
ROOF, CEILING, AND 1 CENTER BEARING FLR.	16	4	3	3	2
	2	1	1	1	1
	4	2	1	1	1
	6	2	2	2	1
	8	3	2	2	3
	10	4	3	2	2
	12	4	3	3	2
	14	5	3	3	3
	16	5	4	3	3

HEADER WIDTH—3" (2-2x), 4.5" (3-2x), 5", 6.5" (4-2x)
EACH W/ 1/2" PLYWD. SPACER BETWEEN

HEADER WIDTH-3" (2-2x), 4.5" (3-2x), 5", 6.5" (4-2x)
EACH W/ 1/2" PLYWD. SPACER BETWEEN

HEADER SPANS—EXPOSURE B
 FOR EXTERIOR LOADBEARING WALLS

HEADER SIZE	SPAN	NO. FULL HGT. STUDS REQ. AT EA. END
(2)2x4'S	4'-7"	2
(2)2x6'S	5'-6"	2
(2)2x8'S	6'-1"	3
(2)2x10'S	6'-8"	3
(2)2x12'S	7'-1"	3
(3)2x8'S	7'-5"	3
(3)2x10'S	8'-3"	3
(3)2x12'S	8'-8"	3
(4)2x8'S	8'-7"	3
(4)2x10'S	9'-6"	3
(4)2x12'S	10'-0"	4

130MPH WINDS-EXPOSURE "B"(TYP.) EACH W/ 1/2" PLYWD.SPACER BETWEEN

NOTE:
BUILDING WIDTH IS MEASURED PERPENDICULAR
TO THE RIDGE. FOR WIDTHS BETWEEN THOSE
SHOWN, SPANS ARE PERMITTED TO BE INTER-
POLATED.

NOTE:
ALL HEADERS SHALL HAVE SOLID BLOCKING



1710 ROSELAWN DR.
SLIDELL, LA. 70460
985.641.7237

NOTE: Although every effort has been made in preparing these plans, the contractor is ultimately responsible for checking plans for accuracy and or errors before construction begins.

[illegible]

Sandra Smith

Cross Section

Project number	0805
Date	3/15/08
Drawn by	JC
Checked by	JC
A104	
Scale	As indicated